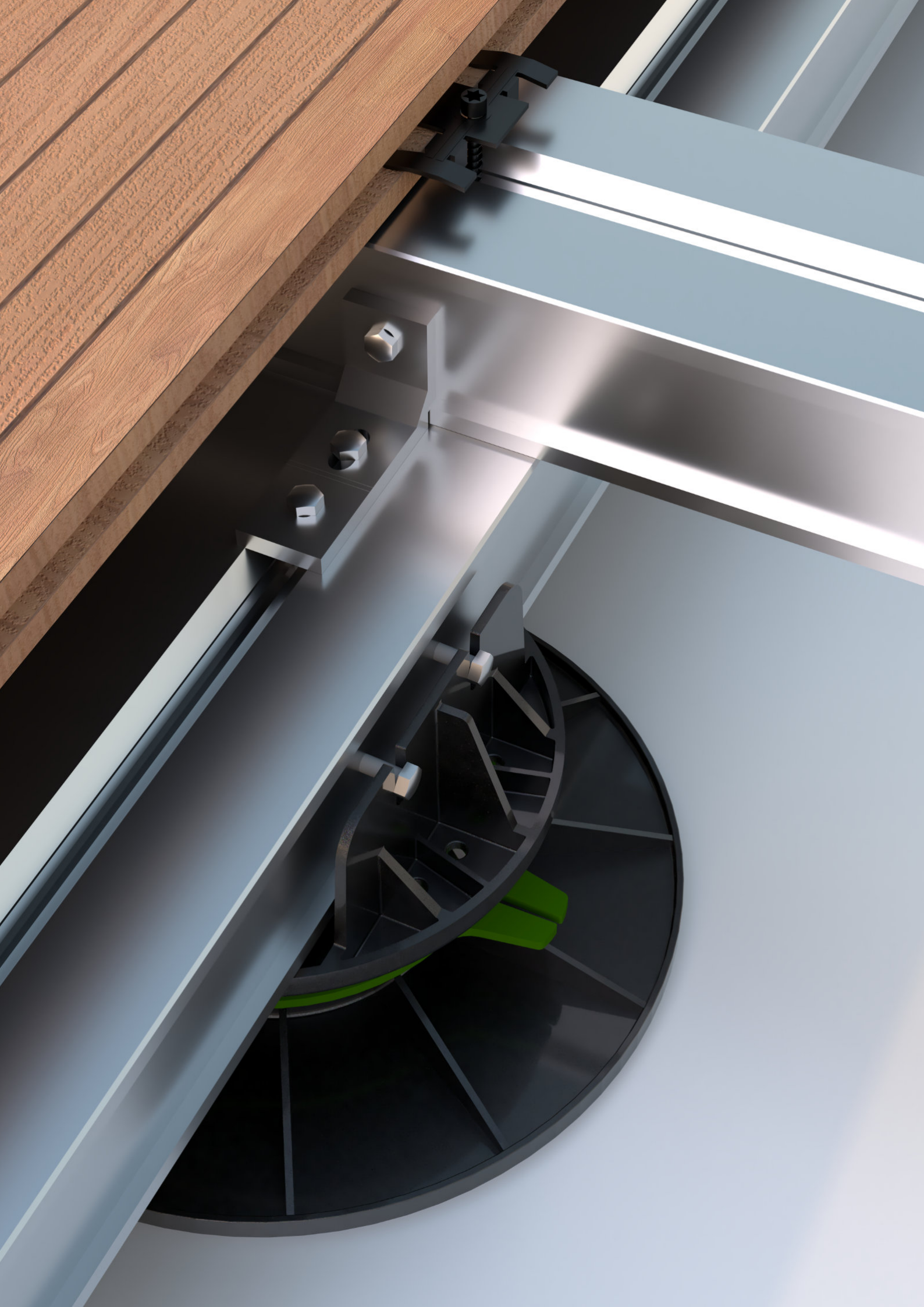


SystemPeter PICLIP



Product catalogue





SYSTEM PETER **PICLIP**

A professional terrace assembly system created with high quality products, speed of assembly and durability of the terrace in mind. The Peter PICLIP system is based on many years of experience of installers, focusing on the most important thing. First of all, the speed of installation, which saves time and money when building a terrace.

We build the terrace with long-term quality in mind. Thanks to the aluminum structure, easy leveling system and clips for invisible installation, the terrace will look great for many years.

CONTENTS

05

TERRACE TYPE

09

ALUMINUM
JOIST

10

MOUNTING
ACCESSORIES

12

PE HIDECK

13

JOIST
ACCESSORIES

14

ADJUSTABLE
PEDESTALS FOR
DECKING

15

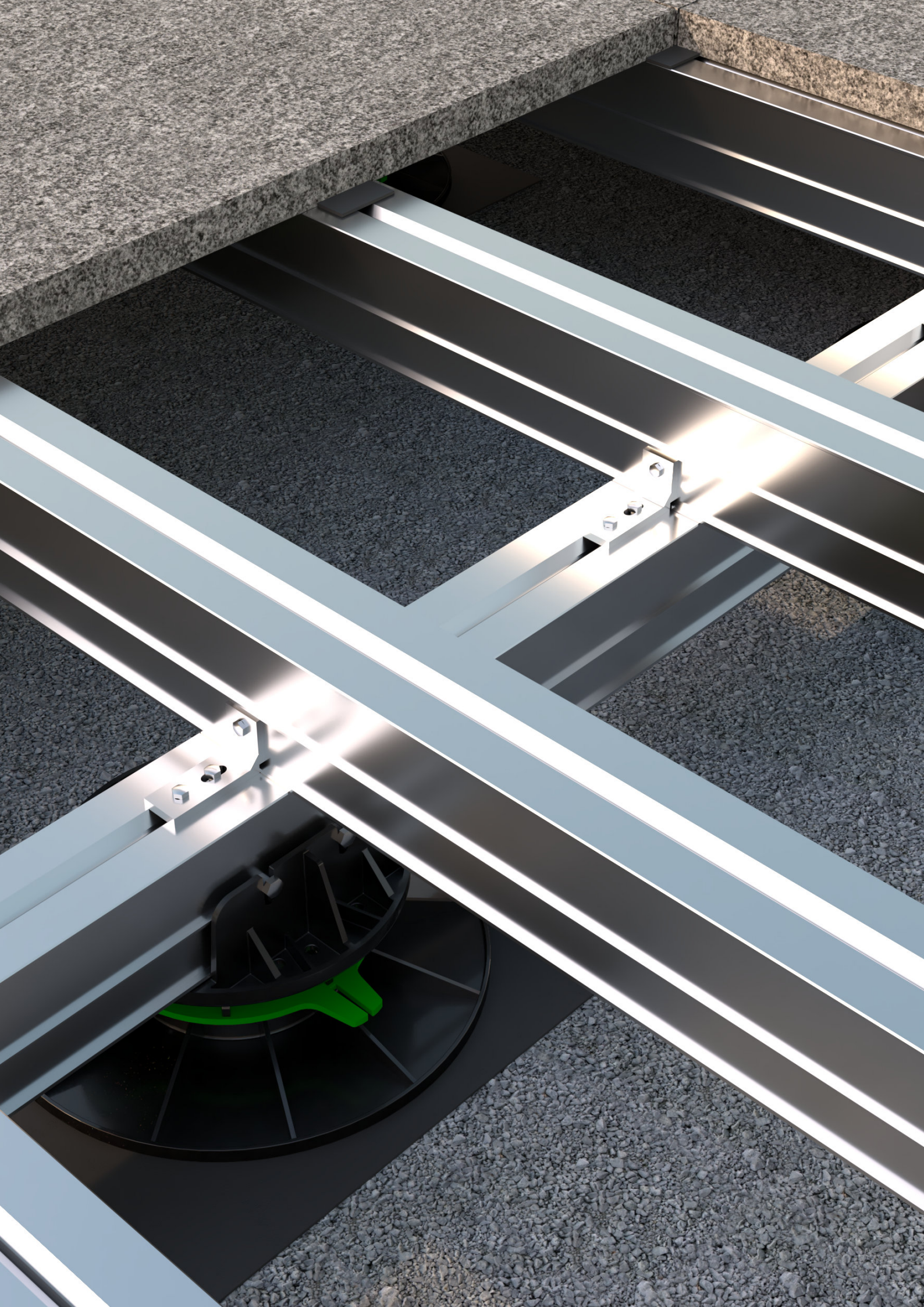
ADJUSTABLE
PEDESTALS FOR
PAVING

17

ACCESSORIES

20

CONTACT
INFORMATION

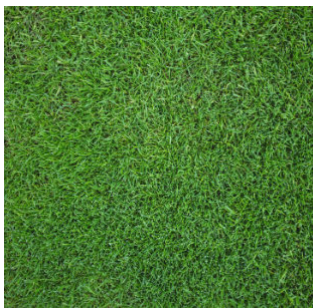


TERRACE TYPES AND THEIR STRUCTURES

SystemPeter PICLIP is an innovation among terrace systems. The aluminum structure allows the use of any terrace covering. You can install a wooden terrace, composite board or terrace slab on the finished, leveled structure. The assembly will differ only in the mountings used. This variable element also allows you to replace the terrace covering without changing the existing structure underneath.

Each of the given structures is durable and resistant to loads, all of the above types can be used on private terraces, balconies, patios, viewing terraces or public use investments.

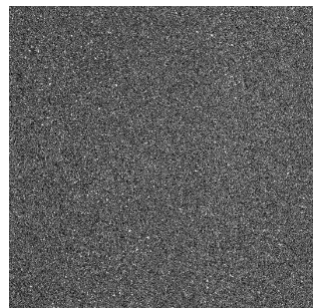
Terraces, thanks to an appropriate construction solution, can be built on the following surfaces



GRASS



GRAVEL



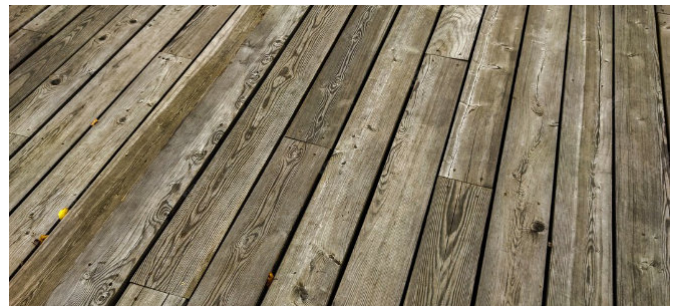
BITUMEN



CONCRETE



ROOF



OLD TERRACE

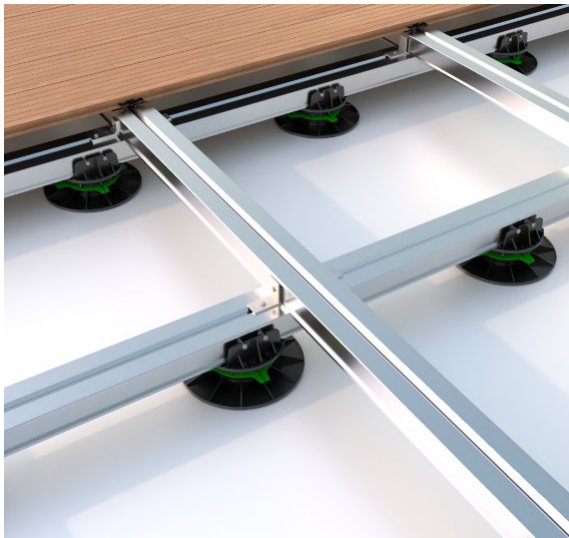
SystemPeter PICLIP elements are resistant to weather conditions, high and low temperatures, heavy loads and are resistant to acids and chemical solutions.

Benefits of using SystemPeter PICLIP when building your terrace:

- ✓ quick installation saves time and money,
- ✓ the space between the ground and the terrace allows for free air circulation,
- ✓ thanks to free air circulation, the ground under the terrace remains dry,
- ✓ possibility of installation on many surfaces,
- ✓ no need to demolish the old terrace,
- ✓ adjustment of the level and height of the terrace without the need for screeds,
- ✓ access to the installation under the terrace,
- ✓ possibility of dismantling one board from the middle of the terrace without dismantling the terrace.



Cross-type construction



Used in places of heavy use or in places where the height to obtain a terrace is very high. The double-joist construction avoids point pressure and, on soft substrates, the pressure force is distributed over a larger area. This type of construction allows you to assemble a terrace made of wooden boards, composite boards or terrace slabs.



Frame type construction

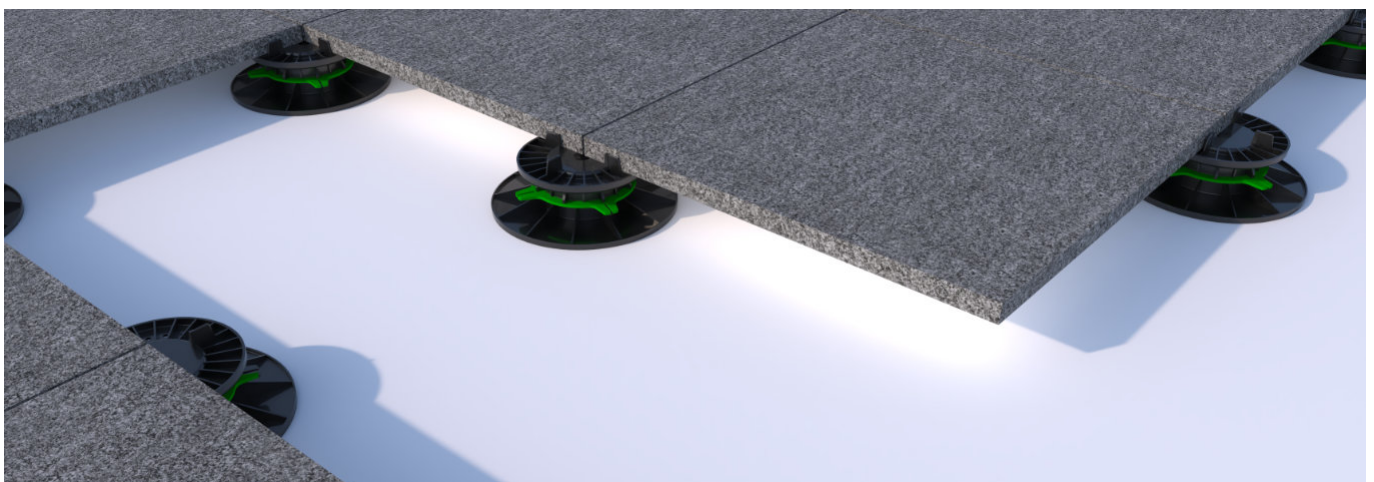


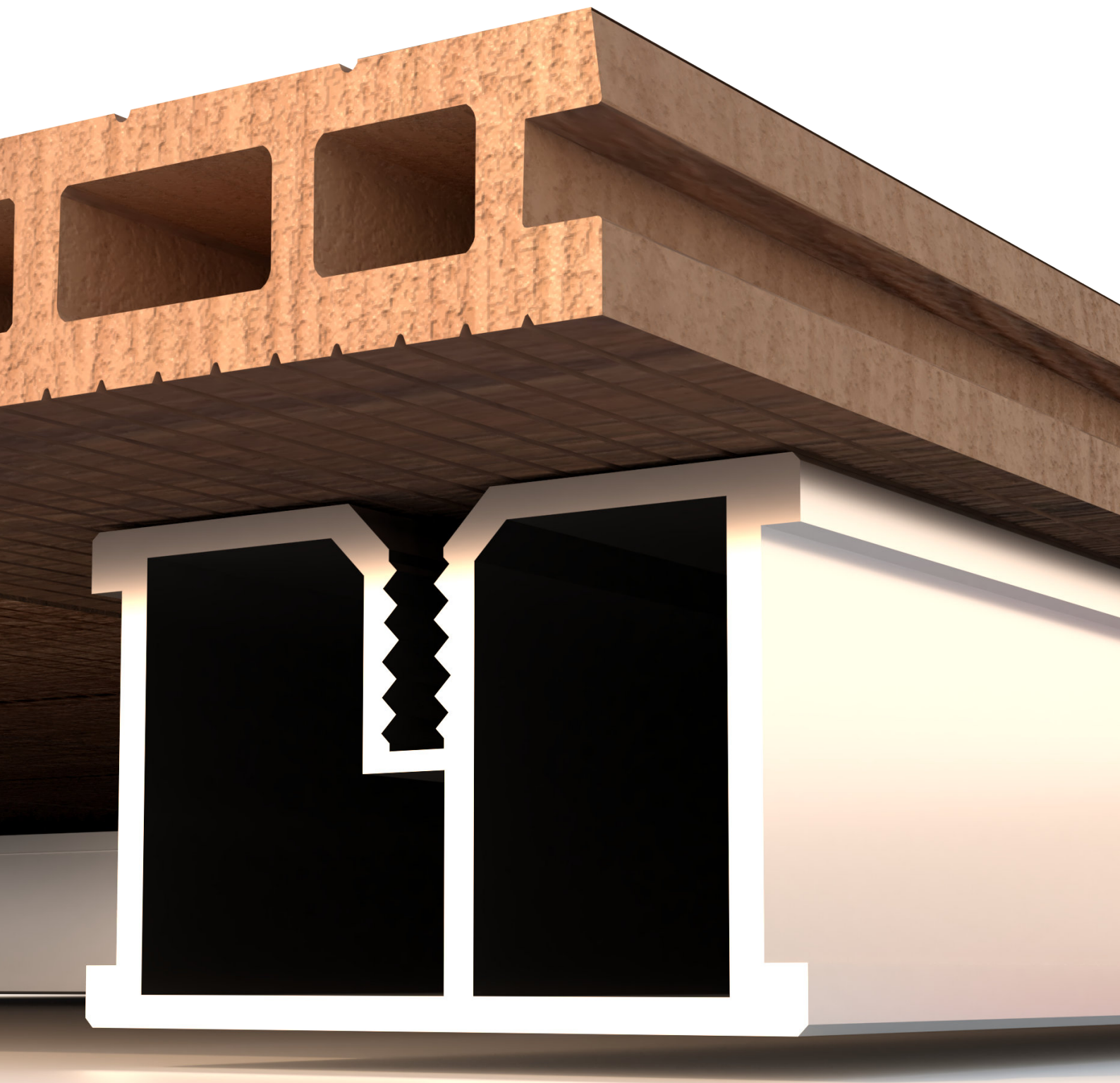
Most often used on balconies where the height between the ground and the target terrace level is low.

The height and slope of the terrace can be adjusted by using "U" leveling pads.

Construction directly on adjustable pedestals

Terraces made of terrace slabs are increasingly often built directly on adjustable pedestals.





**See video
of the installation
of the terrace**



ALUMINUM

SystemPeter PICLIP

JOIST

Thanks to its structure, the SystemPeter PICLIP aluminum joist is more durable than products available on the construction market. Aluminum as the basis of the terrace is a guarantee of long-term quality and durability. Thanks to this type of substructure, the terrace is resistant to weather conditions, heavy loads and deformations. Due to their structure, aluminum joists are more durable than rectangular pipes with a larger cross-section. The screw channel allows for faster and more efficient installation.

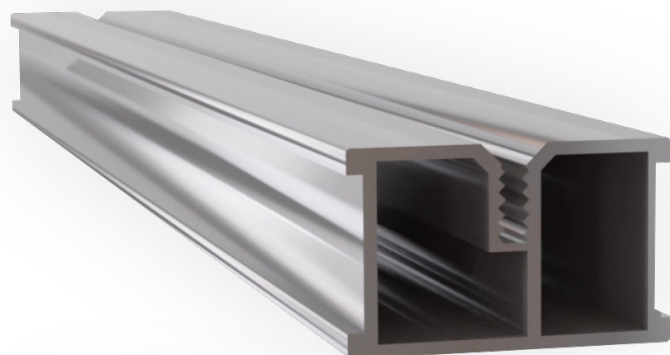
The SystemPeter PICLIP aluminum joist is available in two sizes: 24x39 and 50x39. Two sizes allow us for greater height versatility, different construction heights are obtained when using the above joists interchangeably in a "frame" type structure or in a "truss" type structure, combining them freely.

Aluminum joists are the perfect solution if you want a structure that is durable, lightweight, aesthetically pleasing, and resistant to various weather conditions.



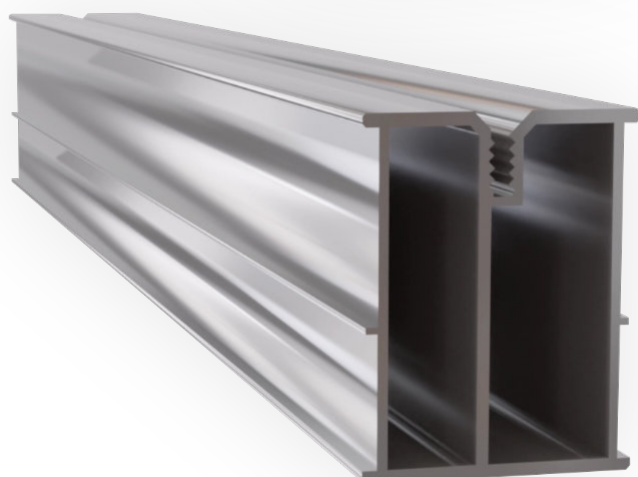
Aluminum joist 15x39 S art. no. 203146

The low aluminum joist is a structural element made of lightweight but strong aluminum, which is used to support and stabilize structures, such as floors, terraces. It is characterized by a relatively low height, which makes it ideal for applications where the space between the surface and the ground is limited.



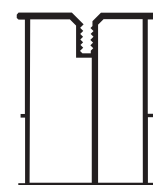
Aluminum joist 24x39 M art. no. 202433

Universal for use on terraces made of composite boards, wooden boards and terrace slabs, it will work well when the adjustment height is not too high and as a frame structure. Joist support according to the table below.



Aluminum joist 50x39 L art. no. 202406

Universal for use on terraces made of composite boards, wooden boards and terrace slabs, increased durability thanks to the height and structure of the joist. The additional wall increases the joist's load capacity.



MOUNTING ACCESSORIES

PICLIP PRO art. no. 202401PRO

PICLIP PRO mounting clip – precision and ease of installation of terrace boards.

Thanks to its special structure, it automatically establishes 6 mm expansion joints – this allows the board to move freely. The clip holds the expansion joints in three places. The black color makes the installation less visible and more aesthetic to the eye than silver clips.

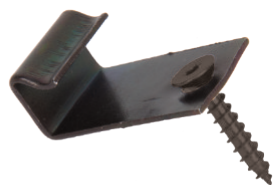


PICLIP art. no. 202403

Mounting clip for invisible installation of terrace boards with side groove. Automatically determines 6 mm expansion joints. The middle part of the clip ensures expansion joints, the black color makes the terrace finish aesthetic.

Both clips allow you to assemble and dismantle any board from the middle of the terrace, without having to deconstruct the whole thing.

- ✓ Two types of screws are used for mounting clips:
- ✓ self-drilling screw 4.2 × 30 art. no. 202400 – a screw with a cylindrical head that allows you to drill directly through aluminum. Fits the PICLIP and PICLIP PRO clips.



BEGINNING CLIP art. no. 202402

A clip that starts the installation of terrace boards. The design of the clip allows for stable mounting of the board with a side slot. The upper part holds and fixes the first board, making it easier to start installing subsequent boards.

The use of appropriate clips and screws for terrace assembly is very important. This fastening element will ensure the final effect of the terrace and the durability of the installation. In the case of composite boards, our solution is invisible installation using a PICLIP or PICLIP PRO clip. The shape of the clips ensures an automatic dilatation of 6 mm. It is best to start the installation of composite boards with a starter clip, which, thanks to its structure, will ensure that the first board is mounted stably and aesthetically.

Peter PUR art. no. 202408

High-quality adhesive and sealing compound.

The high quality of the product also allows for sealing expansion joints, gluing plastics, facade panels, WPC products, bitumen, stone and various types of decorative boards. The extensibility of the glue is very high.

Peter PUR is an adhesive that is resistant to weather conditions and very heavy loads and movements. It will attach the terrace structure, strip and much more. Used in the system for gluing structures on U-pads.

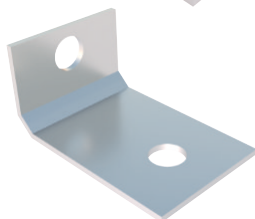


Corner connector art. no. 202404



ALUMINUM

Corner connector made of galvanized steel for "frame" construction. The shape of the corner connector is compatible with SystemPeter PICLIP M and L aluminum joists. Thanks to the use of corner connector, the structure is stable and durable.



Legar's connectors art. no. 202444



ALUMINUM

The joist connector allows you to extend the joist by any length. Its shape is adapted to SystemPeter PICLIP 24x39 and 50x39 aluminum joists.

Legar's cross connector S art. no. 203549

An element connecting perpendicular joists in a "cross" type structure. The use of two legar's cross connectors on each side of the joist ensures the stability of the structure. The use of high-quality angles will ensure a durable terrace structure.

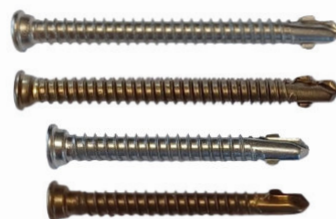
When building a terrace from wooden boards, it is important what effect we want to achieve. For classic top mounting, we can use mounting screws, but you must remember to choose the right ones. Others will be used when installing to wooden joists, others will be used in the case of SystemPeter PICLIP aluminum joists. The system offer includes high-quality wood-aluminum screws in two lengths and two colors to choose from: silver and antique. Wooden boards with a side slot can be used with PICLIP and PICLIP Pro clips for invisible installation.

SCREW WOOD - ALUMINUM 5,5 x 60 mm (SILVER) art. no. 2024162

SCREW WOOD - ALUMINUM 5,5 x 60 mm (ANTIC) art. no. 202653

SCREW WOOD - ALUMINUM 5,5 x 45 mm (SILVER) art. no. 2024168

SCREW WOOD - ALUMINUM 5,5 x 45 mm (ANTIC) art. no. 202474A



Thumb screws for direct mounting of wood to aluminum with a thickness of no more than 3.5 mm. The use of wood-aluminum screws excludes additional drilling. They do not cause cracks in the wood. Made of high-quality A2 stainless steel, resistant to corrosion and UV radiation weather conditions. Installation with a traditional TX bit.

SIDE CLIPS FOR CERAMIC SLABS, art no. 202425



Plastic clips for mounting terrace slabs on SystemPeter PICLIP aluminum joists. The clips allow for quick and durable installation of the terrace slab. They provide 3 mm expansion joints between the boards. The side clip protects against possible shifts of the slabs at the ends of the terrace.

CLIP FOR CERAMIC SLABS, art no. 202424



Terrace slabs can be mounted in two ways: directly on adjustable supports or on an aluminum structure. In the case of the second installation, we use clips under the board for the aluminum, edge and middle joists. The use of clips will allow for quick installation, their shape automatically sets a 3 mm expansion joint, the edge clip will ensure a stable end of the terrace and keep the slab in place.

DISTANCE CROSS art. no. 202954

An element that allows for quick installation of a terrace slab on aluminum joists. Installing the element on acoustic tape. It allows you to connect the slab with a terrace board. Provides 3 mm of expansion joint between the boards.

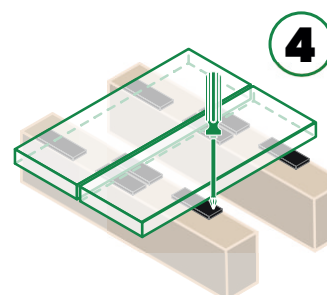
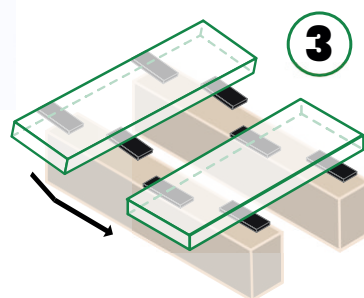
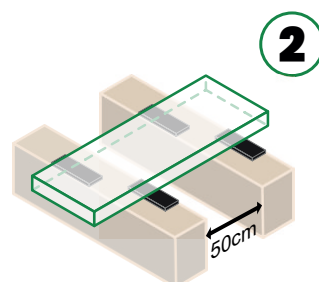
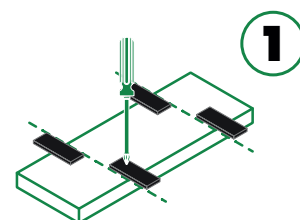
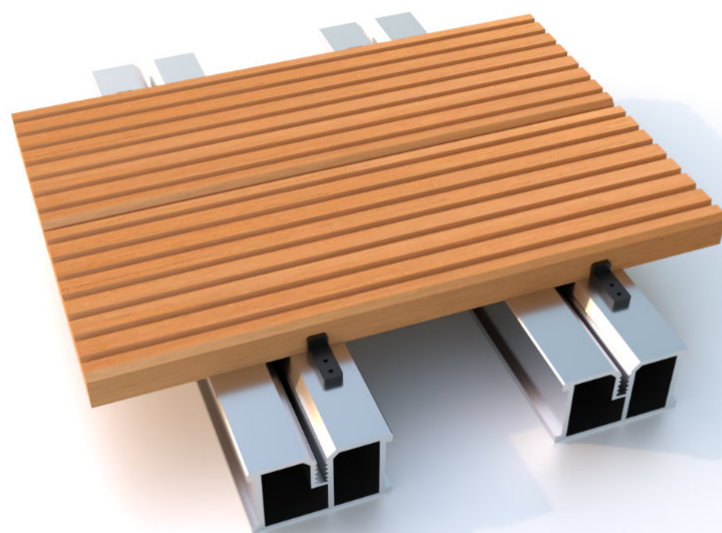
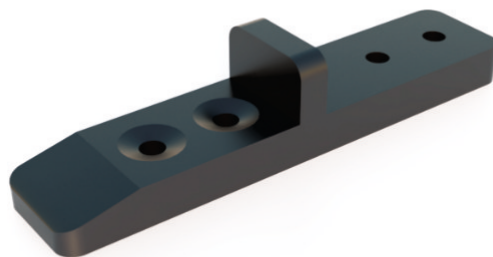


PE HIDECK

HIDDEN DECK FASTENING SYSTEM

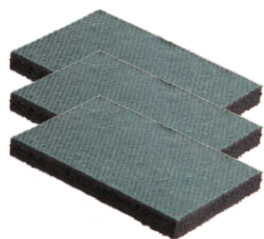


**FOR WOODEN AND COMPOSITE
DECKING BOARDS**



JOIST ACCESSORIES

PAD UNDER JOIST 8 mm art. no. 202446



Used under aluminum and wooden joists. It ensures air circulation, free water flow and joist cushioning. Made of recycled plastic, highly resistant to weather conditions.

Pad size 8 x 5 x 0.8 cm

Acoustic tape 3 x 40 mm art. no. 203021



Self-adhesive acoustic tape, used for soundproofing and expansion joint purposes, is waterproof and resistant to UV radiation.

LEVELING U PADS U

"U" leveling pads are a solution that allows us to adjust the level of the terrace where there is a small difference in levels between the screed and the door or window. The solution works great when assembling structures on balconies.

The washers are made of high-quality material and have a special shape that allows for stable installation and free flow of rainwater.

U leveling pads allow you to use them individually or combine several to obtain a given height. The height range of the pads is from 1 mm to 10 mm.

MIX OF LEVELING U PADS 150 items art. no. 202436



MIX OF LEVELING U PADS 250 items art. no. 202435



ADJUSTABLE PEDESTALS FOR DECKING



Adjustable pedestals are an innovative terrace leveling system. Pedestals are the easiest way to compensate for ground faults. The adjustment range of the pedestals is from 8 mm to 260 mm. The brackets are available in versions for slabs and joists.

We offer an ideal solution for people looking for an even and durable surface on their terrace. Give yourself complete freedom in design and installation - our pedestals will adapt to any surface and ensure the stability of the structure for many years.

ADJUSTABLE PEDESTALS FOR DECKING			
SIZE	ART. NO.	AMOUNTS IN BOX	AMOUNTS ON PALLET
8-20 mm	2024315	25 psc.	625 psc.
25-40 mm	202415	25 psc.	625 psc.
40-60 mm	202416	25 psc.	625 psc.
60-90 mm	202417	25 psc.	625 psc.
90-150 mm	202418	25 psc.	625 psc.
150-260 mm	202419	25 psc.	450 psc.

Material used for production adjustable pedestals are recycled

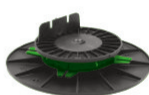
Adjustable pedestals for joist are available in the following sizes:



8-20 mm



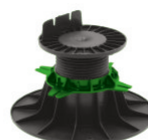
25-40 mm



40-60 mm



60-90 mm

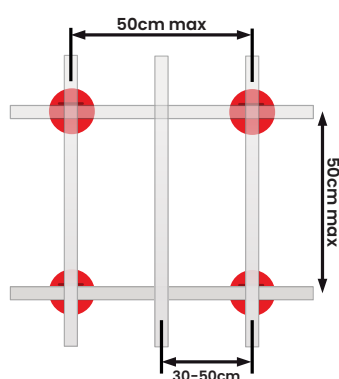


90-150 mm

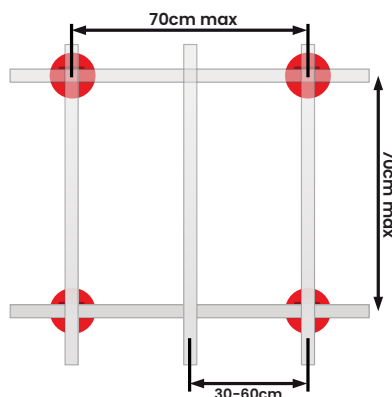


150-260 mm

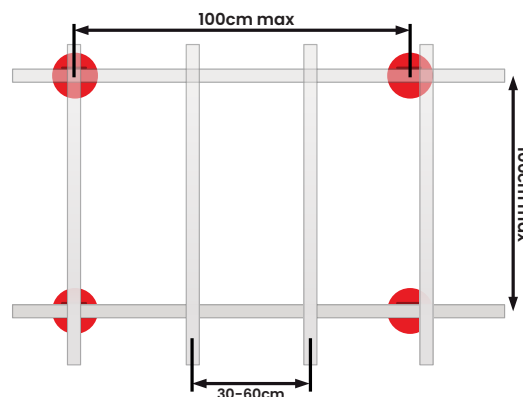
Laying out the brackets for joist 15x39mm



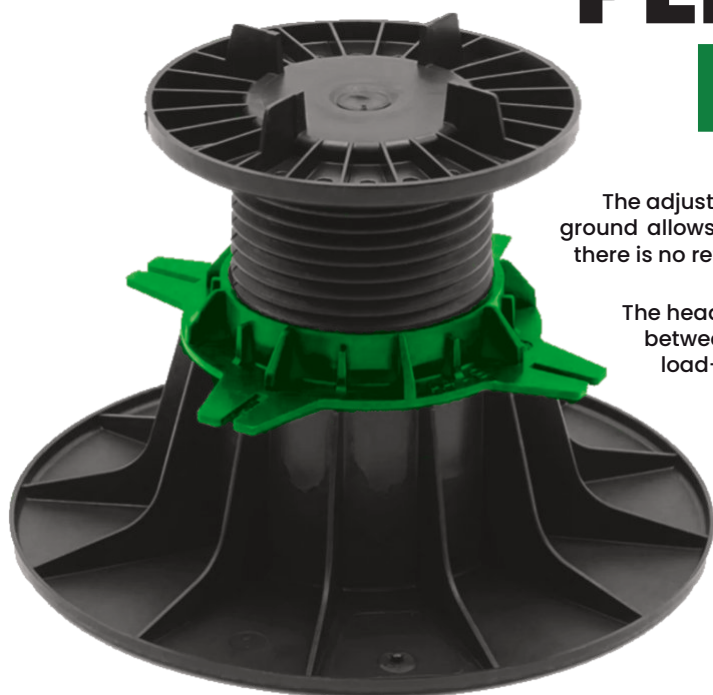
Laying out the brackets for joist 24x39mm



Laying out the brackets for joist 50x39mm



ADJUSTABLE PEDESTALS FOR PAVING



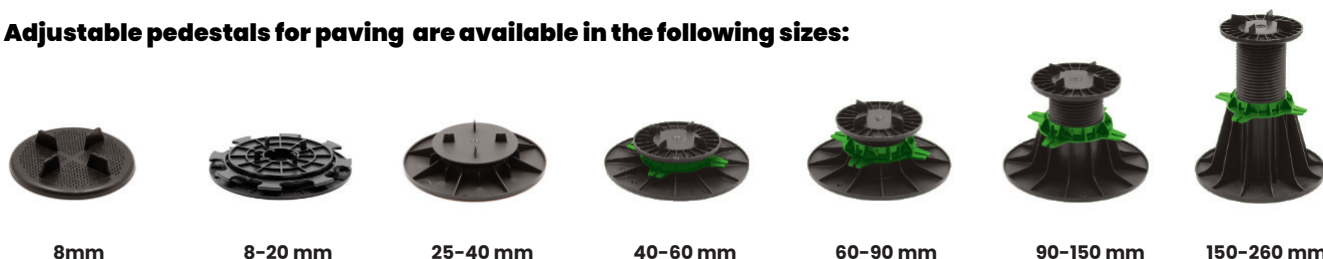
The adjustable pedestals is the basis of every ventilated terrace. Space from the ground allows free air circulation. Thanks to the decrease we can also obtained, there is no retention of water on the surface.

The head of the slab support automatically sets a 3mm expansion joint between the slabs plates. The construction is easy, glass and very durable, load-bearing brackets is up to 1 t of pressure on 1 bracket.

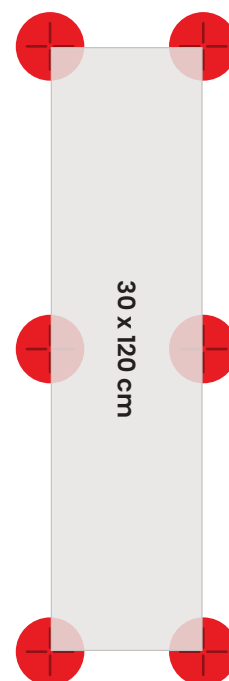
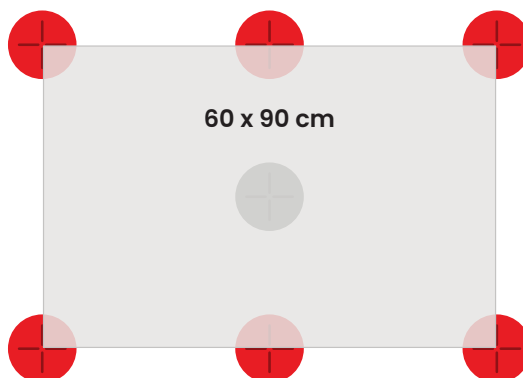
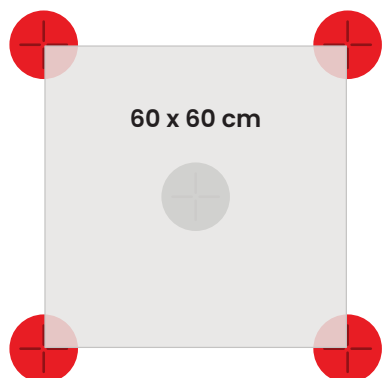
ADJUSTABLE PEDESTALS FOR TERRACE SLABS			
SIZE	ART. NO.	AMOUNTS IN BOX	AMOUNTS ON PALLET
8 mm	202409	25 psc.	625 psc.
8-20 mm	2024314	25 psc.	625 psc.
25-40 mm	202410	25 psc.	625 psc.
40-60 mm	202411	25 psc.	625 psc.
60-90 mm	202412	25 psc.	625 psc.
90-150 mm	202413	25 psc.	625 psc.
150-260 mm	202414	25 psc.	450 psc.

Material used for production adjustable pedestals are recycled

Adjustable pedestals for paving are available in the following sizes:



Check how to properly arrange the adjustable pedestals for following slabs: 60 x 60 cm, 60 x 90 cm, 30 x 120 cm



EXTENSION 60mm art. no. 2024368

EXTENSION 110mm art. no. 202420

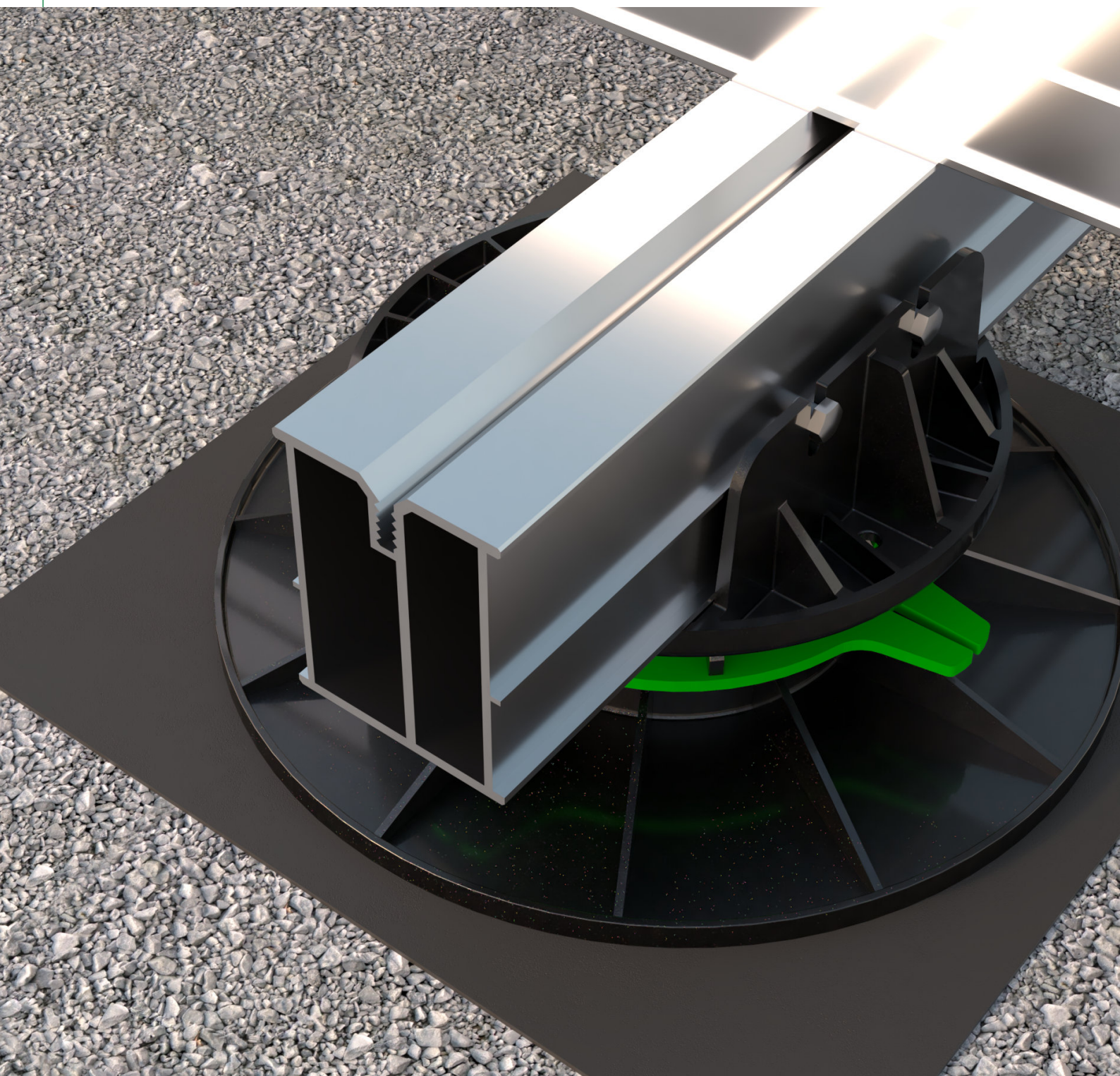


Extension 110 mm and 60 mm increasing the adjustment range of the adjustable bracket 90-150, 150-260 and 60-90 in the case of a 60 mm adapter. Compatible with adjustable brackets under the slab and under the joist. The maximum number of 110 adapters per one bracket is four pieces. This will increase the adjustments from 440 mm. The maximum number of 60 mm adapters is eight pieces, thus increasing the height of the bracket by 480 mm. The brackets and adapters retain their properties and the load on the bracket is 1t.

SELF-LEVELING DISC art. no. 202423



The self-leveling disc is used to create or catch up to 5 % slope over 1m. Compatible with adjustable pedestals for slabs and joists from 25-40 mm in size. Placing adjustable pedestals on the disk increases the height of the entire pedestal by 25 mm.



ACCESSORIES

Vibration buffer art. no. 202447

The support pad has a soundproofing and shock-absorbing function. This use will silence the movement of the plate. The board may make minimal noise when in contact with the support. The material it is made of has soundproofing and shock-absorbing properties.



Peter Mat art. no. 202422



Peter Mat, a pad under pedestal that protects the delicate surface against damage. The mat made of plastic has protective properties and is used under adjustable pedestals under the slab and under the joist. Pad size 24 × 24 × 0.2 cm.

TERRACE SIDE COVERING

DILATATION CLIP art. no. 202449 (steel)

DILATATION CLIP art. no. 203518 (composite)

The spacer clip is an element necessary to build a ventilated terrace made of ceramic tiles. Using a clip allows you to create a distance between the slab and the wall adjoining the terrace. The clip will protect the facades and allow minimal movement of the panel against the wall, while securing the facades. The spacer clip allows rainwater to flow freely from the terrace.

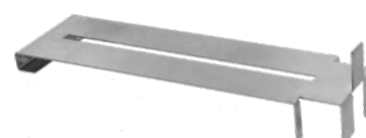


BOTTOM BORDER CLIP art. no. 202448



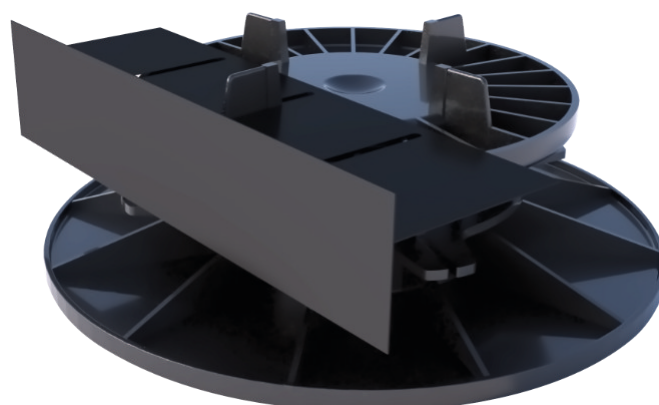
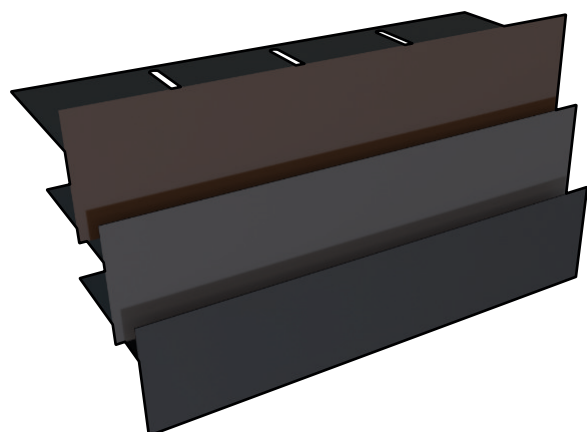
Elements for the side development of a ventilated terrace. Thanks to the use of side handles, the terrace plinth made of slabs will look aesthetic and good. We will avoid problematic glueing. Handles dedicated to adjustable pedestals under the plate in the adjustment range of 40-60, 60-90, 90-150, 150-260 mm.

UPPER BORDER CLIP art. no. 202445



TERRACE SIDE MASKING art. no. 202449

An element created for customers who prefer a minimalist finish. The cover made of sheet metal aesthetically finishes terraces and balconies. The end element is mounted to adjustable brackets thanks to special cuts. The structure also protects the facades against water stains.





SystemPeter PICLIP



www.peterpiclip.pl



Contact information

Are you interested in purchasing our products?

Check out the current product database at: www.peterpiclip.pl

For Consumers, Distributors and Installers:

Office

ul. Długa 7a-9
62-800 Kalisz

Commercial department

+48 508 148 902
+48 510 402 546
+48 501 398 941

biuro@peterpiclip.pl

**Are you interested in our products?
Write or call us.**

